

NATIONAL SECURITY AGENCY
* MONITORED DEVICE *



MARINA

Page 1 of 1

	<input type="checkbox"/>	Application
1	<input type="checkbox"/>	eMail
2	<input type="checkbox"/>	eMail
3	<input type="checkbox"/>	eMail
4	<input type="checkbox"/>	IM

<

Forward Contacts: <= 32

Reverse Contacts: 6

Sent Messages: 2

Received Messages: <= 29

Logins: <= 22

Passwords: 0

Selector Summary: <= 16

Web Cam Photos: 0

Equivalent IDs: 5

Page 1 of 1

	<input type="checkbox"/>	Application
1	<input type="checkbox"/>	eMail
2	<input type="checkbox"/>	eMail
3	<input type="checkbox"/>	eMail
4	<input type="checkbox"/>	IM

What is QUANTUM?

QUANTUM Generic Animation – High Level of How It Works



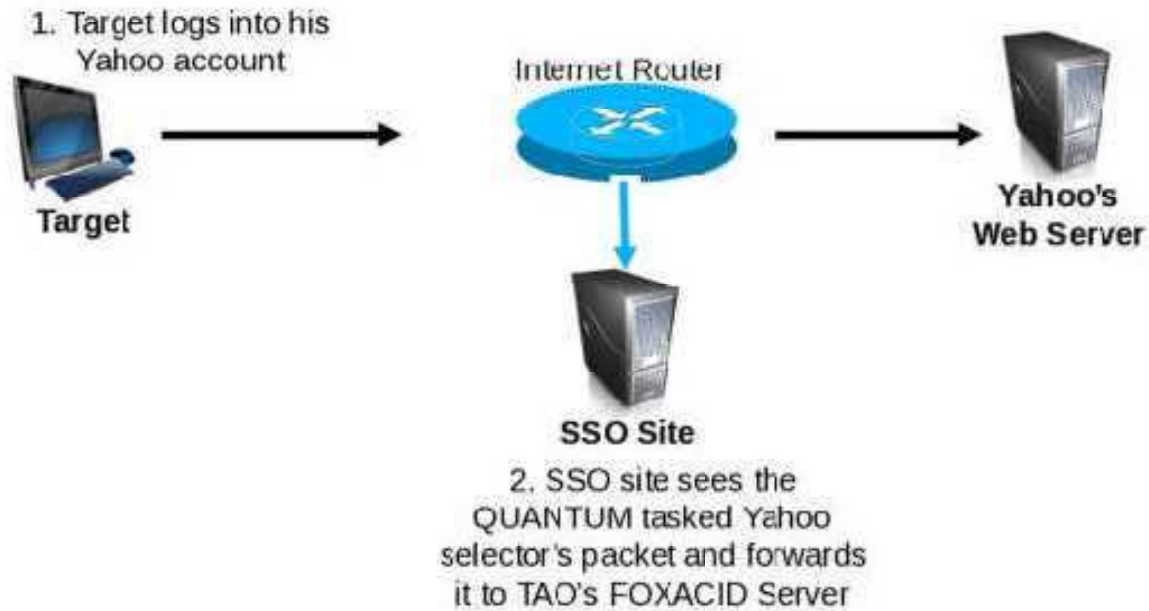
What is QUANTUM?

QUANTUM Generic Animation – High Level of How It Works



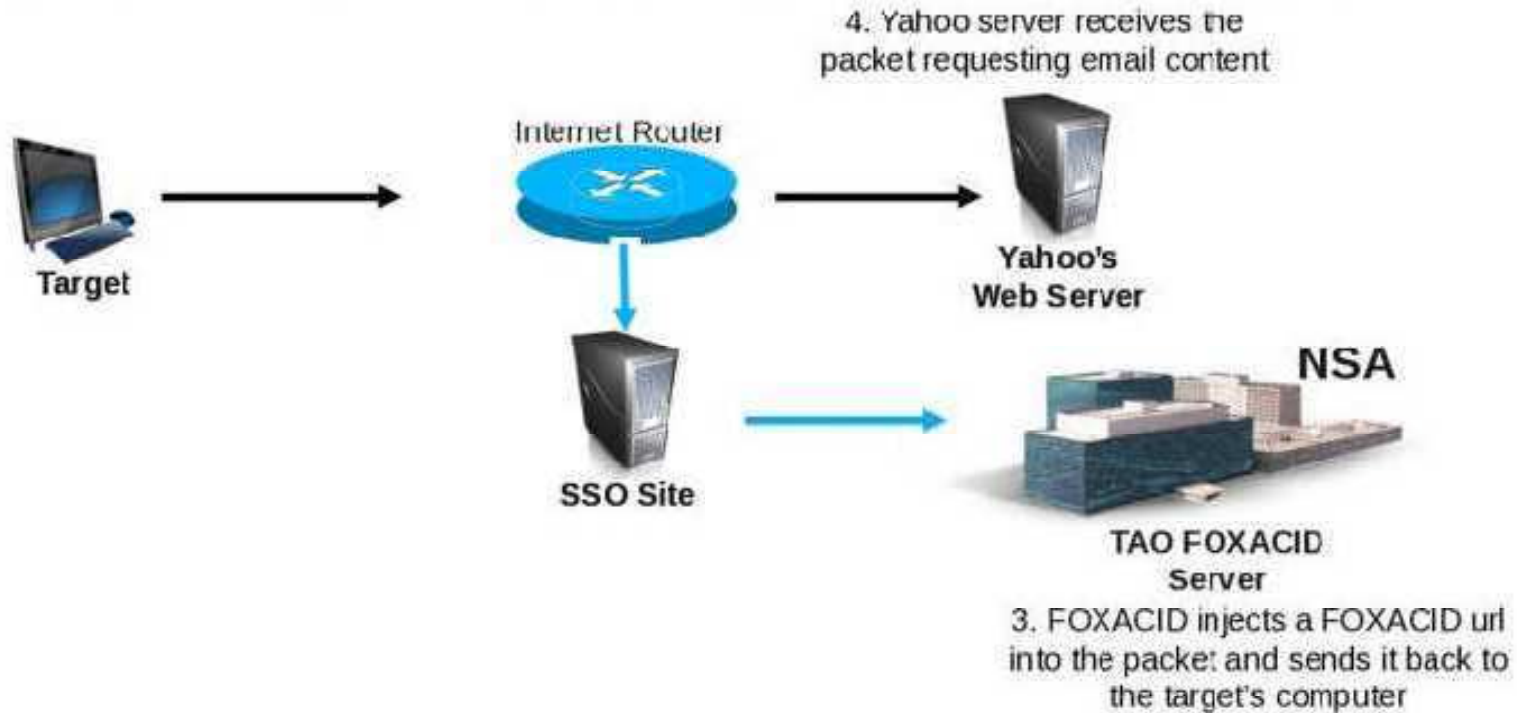
What is QUANTUM?

QUANTUM Generic Animation – High Level of How It Works



What is QUANTUM?

QUANTUM Generic Animation – High Level of How It Works



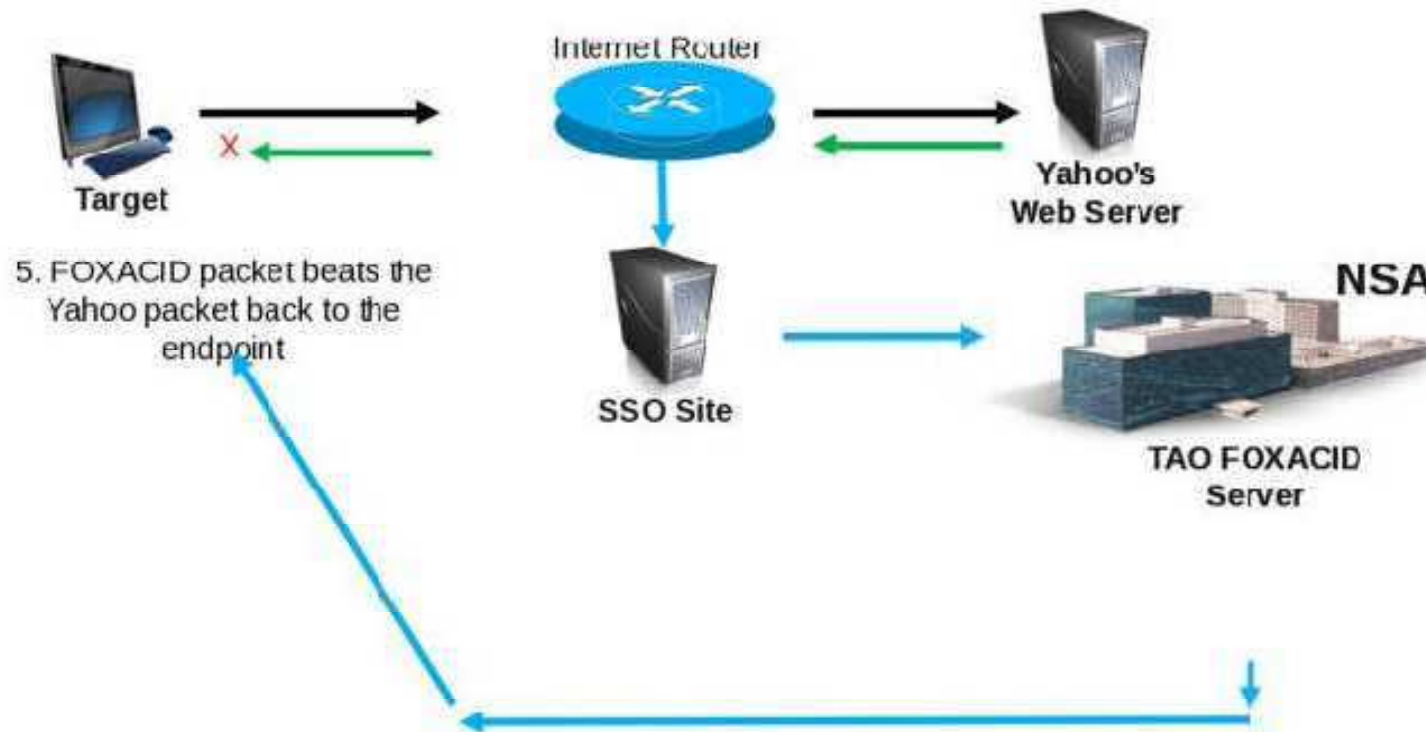
SDS

Booz | Allen | Hamilton

SIGINT | Development | Support

What is QUANTUM?

QUANTUM Generic Animation – High Level of How It Works



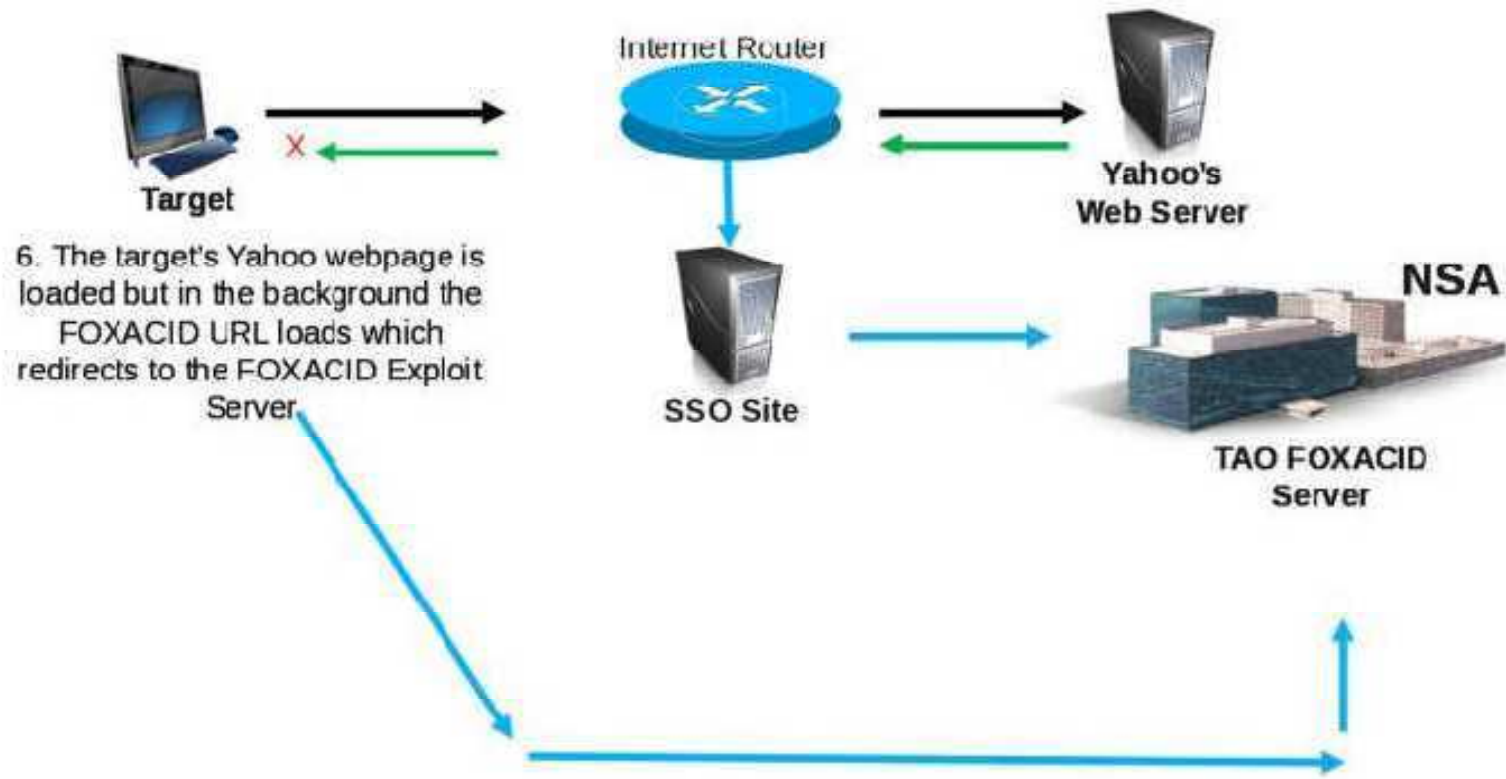
SDS

Booz | Allen | Hamilton

SIGINT | Development | Support

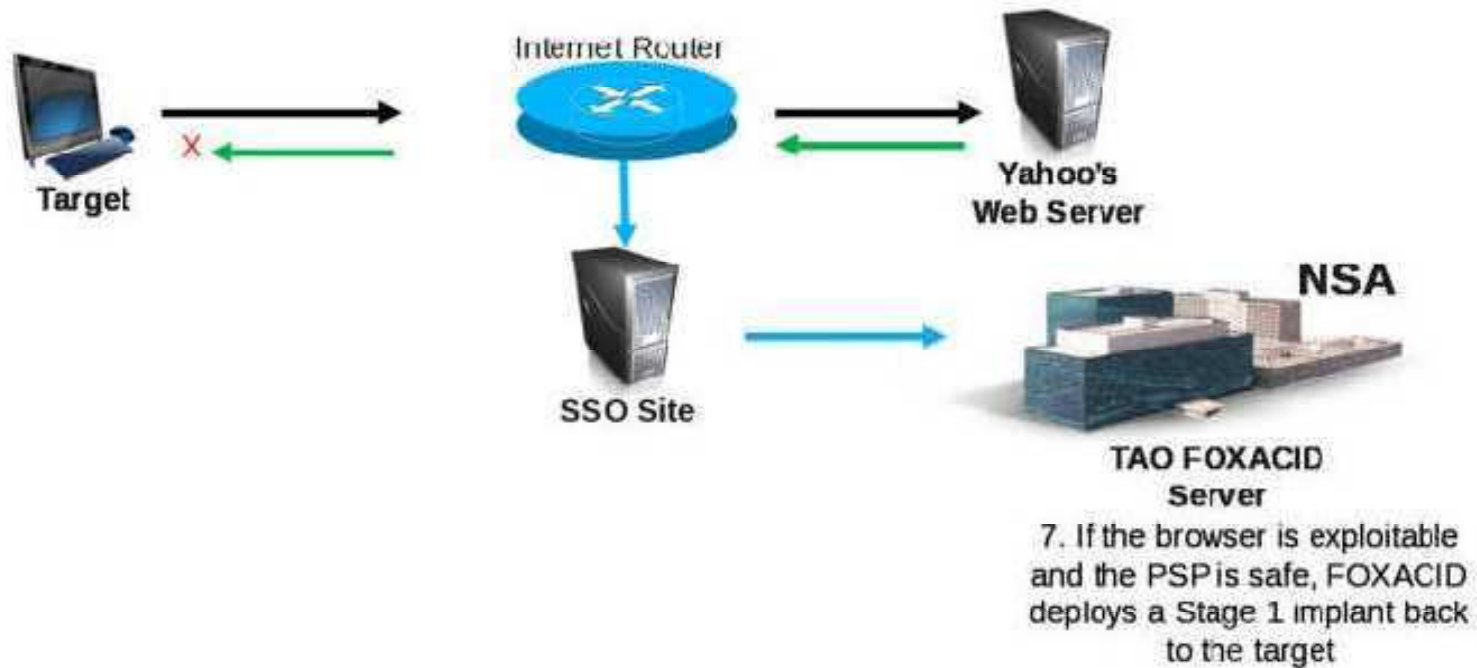
What is QUANTUM?

QUANTUM Generic Animation – High Level of How It Works



What is QUANTUM?

QUANTUM Generic Animation – High Level of How It Works



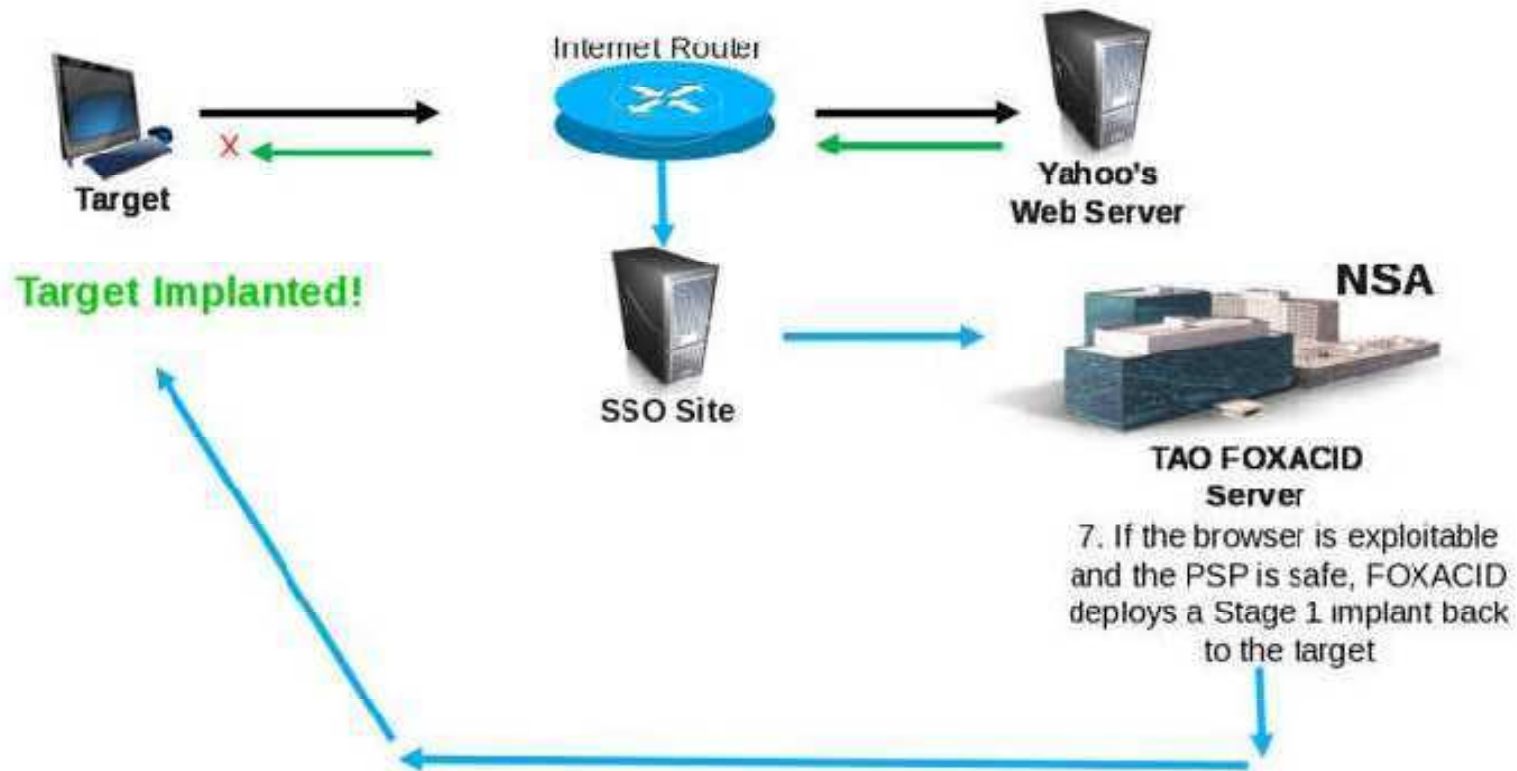
SDS

Booz | Allen | Hamilton

SIGINT | Development | Support

What is QUANTUM?

QUANTUM Generic Animation – High Level of How It Works



SDS

Booz | Allen | Hamilton

SIGINT | Development | Support

QUANTUM Capabilities – NSA

(TS//SI//REL) NSA QUANTUM has the *greatest* success against <yahoc>, <facebook>, and Static IP Addresses. New QUANTUM realms are often changing, so check the [GO QUANTUM](#) wiki page or the [QUANTUM](#) SpySpace page to get more up-to-date news.

NSA QUANTUM is capable of targeting the following realms:

- IPv4_public
- alibabaForumUser
- doubleclickID
- emailAddr
- rocketmail
- hi5Uid
- hotmailCID
- linkedin
- mail
- mailruMrcu
- msnMailToken64
- mailruMrcu
- msnMailToken64
- qq
- facebook
- simbarUuid
- twitter
- yahoo
- yahooBcookie
- ymail
- youTube
- WatcherID



SDS

Base | Area | Handling

SIGINT | Development | Support

QUANTUMTHEORY – GCHQ

If a Partnering Agreement Form (PAF) is set up with GCHQ for the CNO project, then the R&T Analyst can utilize GCHQ QUANTUMTHEORY to include additional capabilities such as:

- • ALIBABA
- • AOL
- • BEBO_EMAIL
- • DOUBLE_CLICK
- • FACEBOOK_CUSER
- • GOOGLE_PREFID
- • GMAIL
- • HI5
- • HOTMAIL
- • LINKEDIN
- • MAIL_RU
- • MICROSOFT_MUID
- • MICROSOFT_ANONA
- • RAMBLER
- • RADIUS
- • SIMBAR
- • TWITTER
- • YAHOO_B
- • YAHOO_L/Y
- • YANDEX_EMAIL
- • YOUTUBE
- • IP Address

More information on: https://wiki.gchq/quantumtheory/QUANTUM_BISCUIT

If you cannot get to the link try: http://www.gchq.gov.uk/quantumtheory/QUANTUM_BISCUIT



SDS

Base | Area | Handling

SIGINT | Development | Support